

# THE WORLD'S FIRST CLINICAL IMAGING & PATIENT CONSULTATION SOLUTION



## Featuring... Vatech's Virtual Consultation Tool (VCT)

With over 200 unique animations, VCT gives you the tools to not only educate patients on treatment plans, but also show how this plan is relevant to their specific case.



## Get The Most Out Of Your Images

Using our revamped Sharpening and Max Sharpening Tool, enhance the quality of your images even further than ever before.



## Manage Your Images, The Easy Way

Organize and export your images quickly and efficiently and avoid complicated procedures and training using EZDent-i's intuitive Click-And-Drag based interface.



# CUTTING-EDGE SOFTWARE FOR CUTTING-EDGE DIAGNOSTICS

Powered by a new 3D VR graphics engine, Ez3D-i is the ideal tool to quickly and easily obtain the correct perspectives needed for accurate, true-to-measurement diagnosis.

Quick and Easy **Dental 3D Imaging Software** for Every Dentist



## PROVIDES QUICK AND ACCURATE DIAGNOSTIC TOOLS

- Various VR coloring modes and 2D filters
- Intuitive implant simulation tools
  - Collision Detection (implant/Canal)
  - Bone Density Verification
  - Oblique Viewing Tools
- 3D Panoramic Navigation
- 2-Click Airway Analysis
- Multiple Sectional Curves and Segmentation Tools

## CONSULTATION MODES INCLUDED

- Presentation Mode
- Over 200 Consultation Videos
- Easy to capture diagnosis image
- 3D Panorama



### Supports Various VR Coloring modes

- Teeth Mode
- Bone Mode
- Soft-Tissue Bone Mode
- MIP Mode
- Soft-Tissue Mode



### Virtual Consultation Tool

- Over 200 consultation videos
- Creation of personalized consultation material



### Implant Simulation

- 3 Click Implant Simulation
- Collision Detection
- Bone Density
- 3D Panorama
- Oblique View Mode



### Provides Quick and Accurate Cross-Section

- 8 Multi-Section(Curve) Management
- One-Click Cross Section (3D PAN tab)
- Canal Drawing

# VARIOUS VR COLORING MODES AND 2D FILTERS

- Quickly and easily switch between multiple VR views



## 2-CLICK AIRWAY ANALYSIS

- With two clicks, obtain the volume and minimum axial area of an airway for efficient airway diagnosis



## FEATURING VATECH'S VIRTUAL CONSULTATION TOOL

- With over 200 unique animations, VCT gives you the tools to not only educate patients on treatment plans, but also show how this plan is relevant to their specific case



## 3D PANORAMIC NAVIGATION

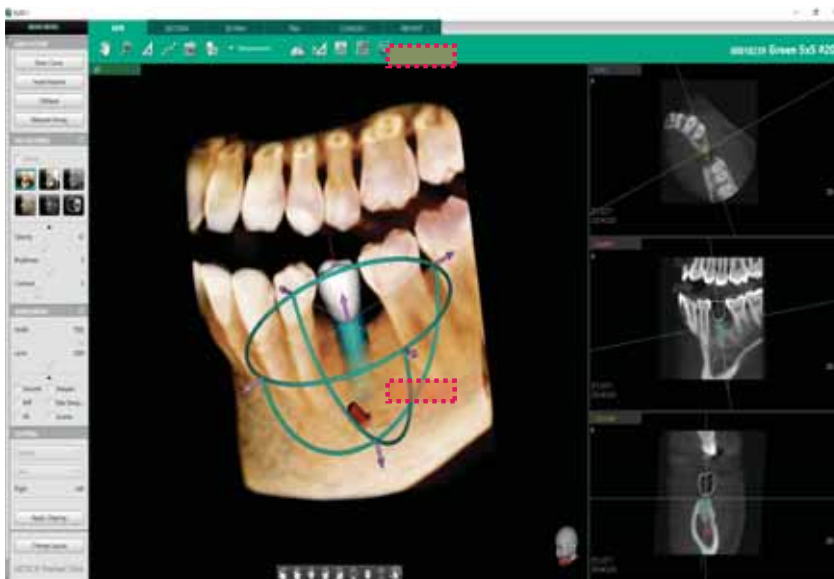
- Easily navigate and obtain a sectional view by utilizing our new and intuitive 3D panoramic navigation mode
- Simply click and drag our viewing window over the 3D panorama to obtain a sectional view of that region
- Angulation made easy



By clicking 3D Navigator and positioning to ROI, it's easy to verify 2D sectional images

## IMPLANT SIMULATION

- Available in all viewing modes in Ez3D-i (MPR/Section/3DPan)
- Colorized bone density viewing modes available
- Adjustable automatic implant collision detection function between multiple implants and/or nerve canal



MPR tab



SECTION tab



3D PAN tab

## MULTI-CURVE MANAGEMENT

- Draw sectional curves from either the MPR View or Sectional View
- Easily manage and up to 8 different sectional curves
- Intuitive click-and-drag sectional view manipulation

